

Installation and Handling

This software serves for configuration of the switching device with wide-range power supply for conductive level probes "SNG-UC".

Installation:

Put the CD into your CD-drive (Enclosed to parameterization-adapter SNG-PA) and follow the instructions.

Alternative

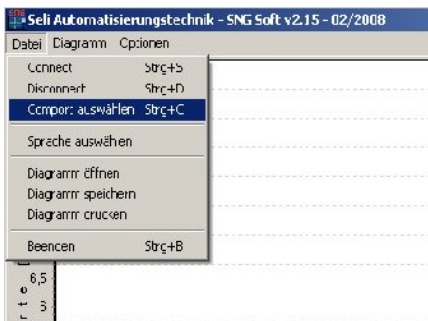
If you download the software from the link www.seli.de/eigene/Produkte/downloads.htm please start the file "Setup-SNG-Programmer.exe" after the download.

After successful installation, please observe the following order!

Please connect first the SMW-PA with the SNG-PA and do the power supply of the SNG next. After that please connect the USB-connection with the computer, and then the jack plug with the SNG-UC.

Start the software

File:

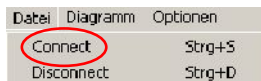


To connect the PC-Software with the level unit please choose the item "Comport auswählen"



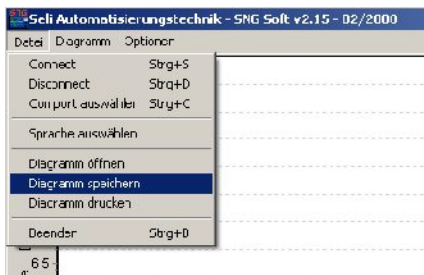
After that choose the button "Automatic"

Please wait until the window closes and choose "Datei" "Connect".... The unit is now online.



Choose "Disconnect" and the connection to the device will be interrupted.

Safe Diagram



Here the complete recording can be stored under any name in any folder.

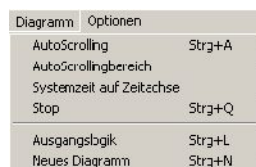
Note:

For security reasons, while data-recording every hour is created a backup file automatically. This will be saved in the folder where the exe.-file is.

Diagram:

If the software is launched, it will freeze the Pos. 1s on the time axis standardly on the left side of the timeline and the following time units will accumulate.

AutoScrolling:



The waveform is displayed in the adjusted Auto-Scrolling-Area (Default 10s)
Here only the adjusted time window is displayed. The overall record is continued in the background.

AutoScrolling-Field:

The range can be adjusted from 1s up to 240s.

Installation and Handling

Diagram:

System-time on timeline

The process of data-recording is shown in seconds (Factory setting). The System-time can be shown on the timeline optional. This application must be started before creating a new recording.

Stop:

Holds the displayed value into the presentation of the recording. The record is continued in the background..

Output logic:

The switching states of the outputs will be displayed on the timeline in the process of recording.

Zoom diagram area:

Zoom in:

Um im Diagrammfenster das Bild zu vergrößern, muss die rechte Maustaste gedrückt gehalten werden und der Mauszeiger von oben links über den zu zommenden Bereich nach unten rechts bewegt werden.

Zoom out:

To zoom out the picture in the diagram-window hold the right mouse-button and move the mouse-cursor from downright to the top left over the field that must be scaled down.

Optionen:

Programming Center:

Here the parameters and functions of the SNG-UC are read out, changed and rewritten in the unit. All functions can be adjusted in the Programming Center.

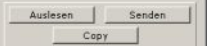


With the function "Auslesen" the adjusted values will be read out of the SNG-UC and displayed in the column "Read".

	Read	Write	Unit	Beschreibung
KANAL 1				
Typ	10 kOhm [kOhm]			
Einschaltwert	5,00		kOhm	
Ausschaltwert	5,50		kOhm	
Ein-Zeitverzögerung	2,0		sec	
Aus-Zeitverzögerung	0,0		sec	
Ausgang 1	R1			
Ausgang 2	-			
Funktion	-			
KANAL 2				
Typ	1 MOhm [kOhm]			
Einschaltwert	300		kOhm	
Ausschaltwert	400		kOhm	
Ein-Zeitverzögerung	0,0		sec	
Aus-Zeitverzögerung	0,1		sec	
Ausgang 1	R2			
Ausgang 2	-			
Funktion	Por umschalt. K1			
KANAL 3				
Typ	1 MOhm [kOhm]			
Einschaltwert	450		kOhm	
Ausschaltwert	600		kOhm	
Ein-Zeitverzögerung	0,1		sec	
Aus-Zeitverzögerung	0,1		sec	
Ausgang 1	E1			
Ausgang 2	-			
Funktion	Por umschalt. K1			
KANAL 4				
Typ	10 kOhm [kOhm]			
Einschaltwert	3,00		kOhm	
Ausschaltwert	4,00		kOhm	
Ein-Zeitverzögerung	0,1		sec	
Aus-Zeitverzögerung	0,1		sec	
Ausgang 1	-			
Ausgang 2	-			
Funktion	-			
AUSGÄNGE / KANALE				
R1	n0			
R2	n0			
E1	n0			
E2	n0			

To edit the files, the button "Coply" must be activated. In this way the files are taken out of the column "Read" into the column "Write"- In the column "Write"- the informations can be edited and modified.

If the changed values should now written to the SNG-UC, you must push the button "Send".



Under "file" in the programming center you find the opportunity to create a new file, open an existing file, save a file and to print the configuration file.

	Read
Dateli	
Neu	
Öffnen (Write)	kOhm [kOhm]
Speichern (Read)	5,00
Konfiguration drucken (Read)	5,50
Beenden	0,0
Ausgang 1	R1
Ausgang 2	-
Funktion	-
KANAL 2	
Typ	1 MOhm [kOhm]
Einschaltwert	300