

Level Switch

Manual SGS



Commissioning

The installation of the SGS is without sealants only with the provided process adapters.

Please notice the max. tightening torque of 5...10 Nm

Please notice the max. tightening torque of 5...10 Nm.

The electrical connection is via the built M12-plug.

The 24 VDC supply voltage is attached according to the wiring diagram.

The active PNP-output is to be connected exemplarily to processing control.

Note:

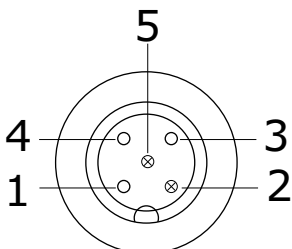
The output voltage is proportional to the input voltage!

Example:

With a supply voltage of 20 VDC the output signal has a voltage < 20 VDC.

It should be noted that the output can only switch the positive side of the supply voltage (max. 50 mA). To switch a load against ground is not possible. .

Pin Configuration



1 +VDC

2 Tx (only adressable with Prog.-Adapter)

3 GND

4 OUT/PNP

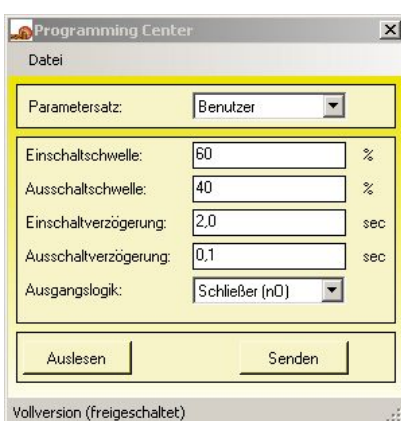
5 Rx (only adressable with Prog.-Adapter)

Factory Settings Basic Version

Factory Setting 1 = aqueous media

Factory Setting 2 = oily media

Custom Settings Full Version



Custom settings are only available when the full version is enabled

Possible Settings

Basic Version with:

- factory adjusting to aqueous media (delivery condition of today)
- second pre-defined measurement range (adaptable via programming adapter through software)
- full-empty signal (adjustable via software)
- process visualization (software)

Full Version (by means of activation code by software)

- today's full software functional size of the SMW-5-S

To configure the limit switch freely, type in "Activation Centre" the license key for your device.

You receive the license key at your seli sales partner after communication of your specific device "product code" (8-digit, fee required).

Installation notes

In the choice of the conductive material, during the installation, during the fusing and the electrical connection of the device, the appropriate technical regulations or local standards are to be observed.

- Protect the device during the installation and operation from electrostatic unloading.
- The device is not suitable for the installation in explosion-prone areas.
- The device must be installed with a process adapter sleeve provided therefore.
- The connected load circuit must be protected to the maximum output current, to prevent a defect in the output in case of a short circuit. Don't connect any additional loads to the terminals for the power supply!
- Separate the device with two pins from the network if live parts can be contacted during works.
- The supply is not separated galvanically from the sensor ground.
- An incorrect installation as well as incorrectly set parameters of the device may affect the application in the proper function or lead to damages.

Independent safety devices should therefore always be provided.

Settings must be performed only by professional staff.

The DIN 61000-4-Part 5: Surge is not entirely fulfilled because of the product geometry, therefore we recommend an additional protective element (e.g. varistor) for connection lines greater than 10 m, or the supply through a protected 24 VDC.

seli GmbH Automatisierungstechnik

Zentrale

Dieselstraße 13

48485 Neuenkirchen

Tel. 05973 / 9474-0

Fax 05973 / 9474-74

E-Mail Zentrale@seli.de

Internet <http://www.seli.de>

