

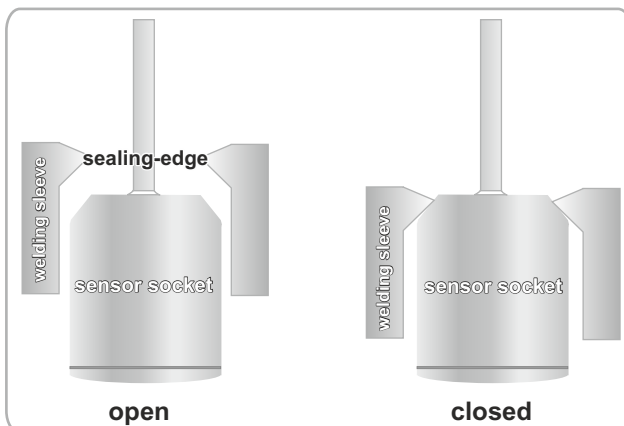
## Hygienic adaption with welding sleeve system and modular process connections

### Basic features

- ▶ hygienic process adaption
- ▶ dead-room and elastomer-free
- ▶ aseptic measuring point
- ▶ EHEDG-conformal
- ▶ modular concept for a huge number of process connections

### Technical features

- ▶ adaption with following threads: M12, G1/2", G1"
- ▶ defined and signified position for cable connection or M12-plug (welding-sleeve-system)
- ▶ Wetted parts made of V4A 1.4404



### Welding instruction

- ▶ Welding in tanks / pipings
1. Drill a hole with outside-diameter of the sleeve  
Tolerance max. : +0,2 mm
  2. Spot the sleeve with 4 points (fig. 1)
  3. Screw in welding-help-plug
  4. Weld the sections between the points (fig. 2)  
4 sections when M12 and G1/2"  
8 sections when G1"

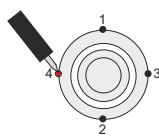


fig. 1

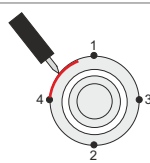


fig. 2

### e. G. G1/2"-system in temperature-measurement



### e. g. G1/2"-system in fill level-measurement



### e. g. G1"-system in pressure-measurement



### Examples of modular process-connections



varivent

triclamp

milk-pipe

HygienigConnect

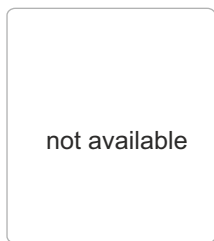
Hygienic adaption with welding-sleeve system and modular process-connections

Welding sleeve system M12

for small pipes / bent tubes and slanted installation



AP 05



not available

small containers



CP 05

small pipes with border crimping



UP 05

Welding sleeve system G 1/2" (EHEDG- Hygienic PEEK-Connect)



for pipes / bent tubes and slanted installation



AP 15 (HPC-Sleeve No.1)

containers



BP 15 (HPC-Sleeve No. 2)

thick walled containers



KP 15 (HPC-Sleeve No. 4)

thick walled containers



CP 15 (HPC-Sleeve No. 6)

pipes with border crimping



UP 15 (HPC-Sleeve No. 7)

Welding sleeve system G 1"

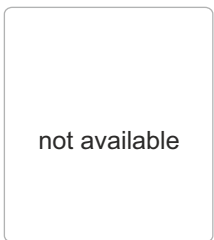
containers/ pipes



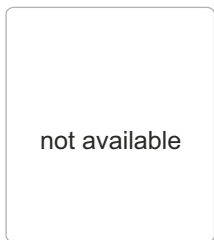
AP 35



BP 35



not available



not available

Examples of order codes

Order Code BP15		BP15- [ ] [ ] - [ ] [ ]			
Control drilling	without control drilling	-	-	[ ]	[ ]
	with control drilling	K	B		
Certification	without material-certification	-	-	[ ]	[ ]
	with 3.1B-certification	31	B		

**modular process connection system**

HygienigConnect

**G1/2"**

Milk-pipe screwing according to DIN 11851    **Varivent**    **Triclamp**

Cone-nut

Union- nut



Nominal sizes and types

DP 15 -DN 25  
EP 15 -DN 32  
FP 15 -DN 40  
GP 15 -DN 50  
LP 15 -DN 65  
MP 15 -DN 80

DÜ 15 -DN 25  
EÜ 15 -DN 32  
FÜ 15 -DN 40  
GÜ 15 -DN 50  
LÜ 15 -DN 65  
MÜ 15 -DN 80

Nominal sizes and types

HP 15 -DN 50 Typ N  
IP 15 -DN 25 Typ F

TP 15

**G1"**

Milk-pipe screwing according to DIN 11851    **Varivent**    **Triclamp**    **DRD-flange**

Cone nut

Union-nut



Nominal sizes and types

FP 35 -DN 40  
GP 35 -DN 50  
LP 35 -DN 65

FÜ 15 -DN 40  
GÜ 15 -DN 50  
LÜ 15 -DN 65

Nominal sizes and types

HP 35 -DN 50 Typ N  
IP 35 -DN 25 Typ F

TP 35

GA 35

GP 35: Combination cone nut  
also suitable for DRD-flange

Techn. Information:  
Complete process connection  
consists of GP 35 GA 35

**Examples of order codes**

HP15- 

--	--

 - 

--	--

<b>Control drilling</b>	without control-drilling	-	-
	with control-drilling	K	B
<b>Certificate</b>	without material-certificate	-	-
	with 3.1B certificate	31	B

**modular process connection system**

HygienigConnect

**Adapter-sleeves**

from G1" hygienic to G1/2" hygienic

from G1" vibration fork to G1/2" hygienic

Clamp connection 1/2", 6mm und 9mm

Clamp connection 1/4", 6mm und 9mm

Shrink-wrap-sleeve with Peek-O-ring-seal for 6mm-sensors



AM 31



AS 31



VATE 1/2...



VATE 1/4...



VAPE 25/6

**Adapter-sleeves**

from G1" hygienic to G1/2" standard

from G1,5" vibration fork to G1" hygienic

High-grade-steel cap for head SBVA with straight knurling

Altitude Compensation-Element (High-Grade-Steel)



AM 32



AM 41



DR 1



DAE-E

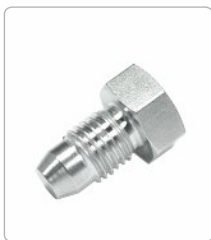
**General Accessories**

**Sealing plugs**

M12

G 1/2"

G 1"



VES 05



VES 15



VES 35

**Welding help plug**

M12

G 1/2"

G 1"



ESS05



ESS15



ESS35

Techn. Information:  
Attention!  
Only suitable als welding help  
Material: brass

## Welding Tube ESR15

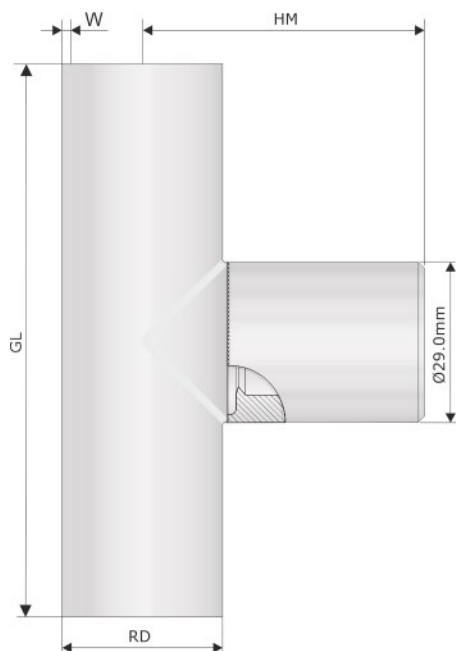
Welding tube for intake of sensors with  
G1/2" hygienic sleeve

### Basic Features

- ▶ Tube material: 1.4435
- ▶ Sleeve material : 1.4404
- ▶ Temperature range: -100°C ... +250°C
- ▶ Pressure range: 0...10 Bar

### Versions

RDxW	GL	HM
DN25 Ø29.0mmx1.5mm	100.0mm	51.5mm
DN32 Ø35.0mmx1.5mm	110.0mm	54.0mm
DN40 Ø41.0mmx1.5mm	120.0mm	57.0mm
DN50 Ø53.0mmx1.5mm	140.0mm	63.5mm
DN65 Ø70.0mmx1.5mm	160.0mm	73.5mm



## Type KEH-50 / 100 / 150

Thermowell for intake of temperatur sensors with G1/2" sleeve

### Basic Features

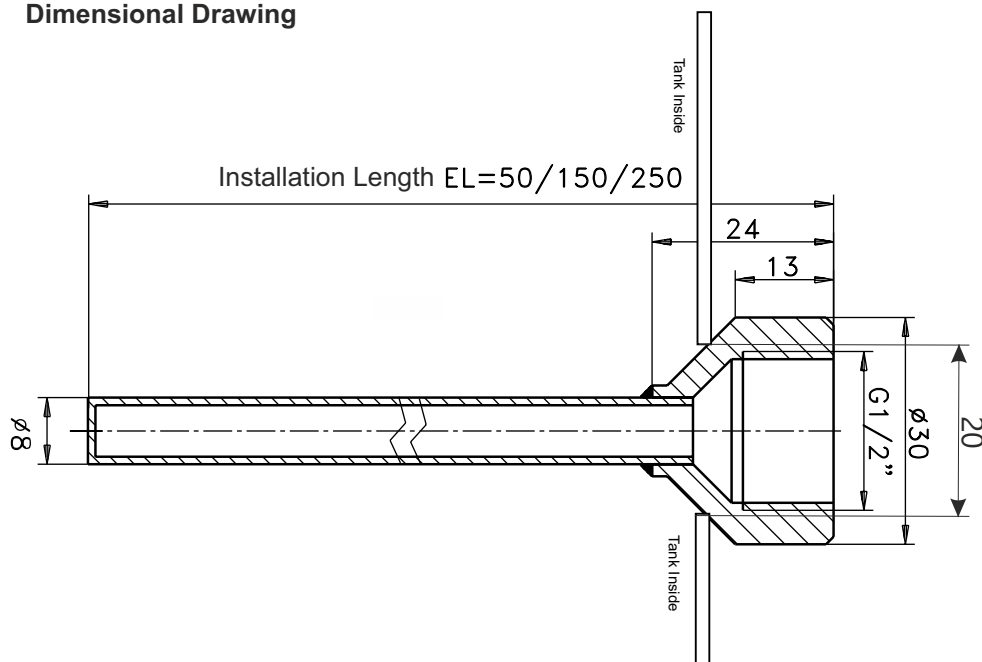
- ▶ For temperature sensors with process connection G1/2"
- ▶ Material of threaded turned part 1.4435/1.4404 (AISI 316L)
- ▶ Material of measuring tube: 1.4435/1.4404 (AISI 316L)
- ▶ Outer Ø measuring tube: 8mm
- ▶ InnerØ measuring tube: 6,4mm



### Ambient Conditions

- ▶ Process temperature: -100°C...250°C
- ▶ Process pressure: 0-16 Bar

### Dimensional Drawing



### Order Code

Installation length in mm

Installation length in mm	KEH -	-	
50mm	0	5	0
100mm	1	0	0
150mm	1	5	0

with 3.1B Certificate

31 B